

MIPS® Navigator™ ICS for MIPS Processor Cores

The MIPS® Navigator™ ICS (Integrated Component Suite) supports all MIPS32® processor cores and is fully integrated with the CodeSourcery SG++ GNU-based Toolchain for MIPS, providing a complete development environment and a rich set of software utilities that is easy to install and use.

The Eclipse environment has rapidly become the embedded industry standard for integrated development environments (IDEs) with software tools and plug-ins from many vendors integrating sophisticated editing, compiling, debugging and program management tools. MIPS Technologies has leveraged this power and extensibility as a control environment and user interface for developing and debugging MIPS-Based™ embedded systems.

Eclipse-based IDE
with Debugger and
Compiler Tools for
MIPS Processors

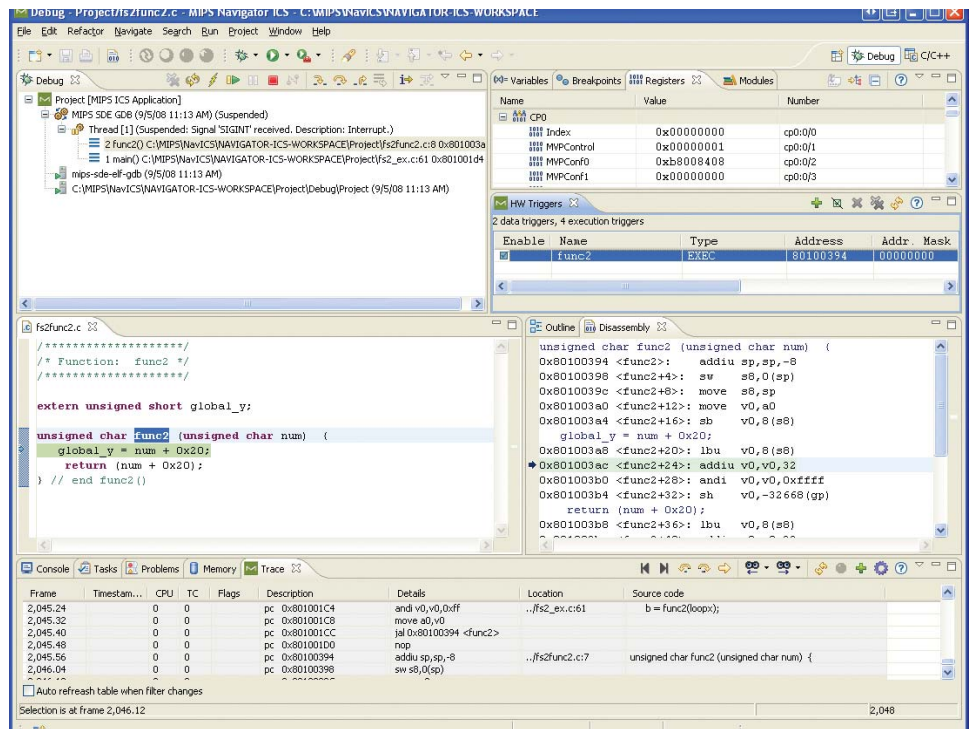
Host Requirements

PC with Windows® XP or
Red Hat Enterprise Linux 4/5
operating system

Product Codes

NAV-ICS: Eclipse-based Navigator
ICS, node locked

NAV-ICS-F: Navigator ICS, floating
network license



Automated Installation Process

Embedded software developers increasingly expect easy to use, out-of-the-box solutions. MIPS Navigator ICS completely automates the installation process for the development environment, including the Eclipse-based IDE, the toolchains, probe software and the MIPSsim™ Instruction Set Simulators. Once installed, it provides sample projects to get the developer started rapidly on new MIPS-Based embedded development projects.

Support for System-level Debug Solutions

For low-level debug, the environment uses the JTAG-based System Navigator™ probe that provides the physical link between the host PC and the target system with a MIPS-Based core. The probe enables access to all of the debug features available in MIPS cores, including EJTAG processor control, PDtrace™, and zero-overhead PC sampling. The MIPS Navigator ICS organizes and presents the information to the user in a more logical way, for faster debugging of the hardware and software.

MIPS Navigator ICS is Extensible

A comprehensive debug environment has to be extensible. Since the MIPS Navigator ICS is Eclipse-based, it supports Eclipse plug-ins, which allow debug and analysis capabilities to be added seamlessly to the MIPS Navigator ICS. Plug-ins can provide support for features such as RTOS awareness or system-level debug features including bus analysis and multi-core debug enhancements. In addition to adding support for system-level debug tools specific to MIPS Technologies' environment, Eclipse plug-ins, including the new Linux Event Analyzer (LEA) plug-in from MIPS, offer access to the growing base of software utilities, including source code editors, browsers, syntax checkers, and program management tools.

Features

- Includes industry standard Eclipse-based CDT and plug-ins
- Includes the CodeSourcery SG++ GNU-based Toolchain for MIPS for both bare-iron targets and GNU/Linux targets
- Provides a complete control center for debugging with MIPS System Navigator probes
- All on-chip and off-chip probe trace features are integrated with the IDE
- Supports multi-core debug with multiple MIPS cores on the EJTAG chain
- Includes MIPSsim CPU Instruction Set Simulators
- Supports all MIPS32, including the 74K™ and 1004K™ cores
- Optional plug-in available for Hot Spot Analysis (HSA) that graphically displays code execution results using the zero-overhead PC sampling capability of certain MIPS cores and the MIPS System Navigator probes
- Optional debug plug-ins available for the ThreadX-aware RTOS debugger and the Viosoft Arriba Linux debugger
- Optional debug plug-in available for the Viosoft Linux Event Analyzer (LEA)
- Node locked PC or floating licenses available
- Runs on Windows or PC Linux
- Software integrated into a single, easy to use installation

**Eclipse-based IDE
with Compiler and
Debugger Tools for
MIPS Processors**

Worldwide Offices

Headquarters
MIPS Technologies, Inc.
955 East Arques Avenue
Sunnyvale, CA 94085
United States
Phone: 408-530-5000
Fax: 408-530-5150
www.mips.com
info@mips.com

MIPS Technologies, Inc. (Oregon)
Beaverton, Oregon
Phone: 503 597 5091
Fax: 503 597 5098

MIPS Technologies (Shanghai) Co., Ltd.
Shanghai, China
Phone: +86 21 6385 8383
Fax: +86 21 5306 0833

MIPS Technologies B.V.
Jhubei, Taiwan
Phone: +886 3 6583 561
Fax: +886 3 6583 563

MIPS Technologies B.V.
Tokyo, Japan
Phone: +81 3 5733 9541
Fax: +81 3 5733 9545

MIPS Technologies B.V.
Remscheid, Germany
Phone: +49 2191 900 200
Fax: +49 2191 900 208

MIPS Technologies B.V.
Haifa, Israel
Phone: +972 4 851 5080
Fax: +972 4 851 5090



© MIPS Technologies, Inc. 2009. All rights reserved.
MIPS, MIPS32, MIPS16e, 24K, 24KE, 34K, 74K, 74Kc, 74Kf, 1004K, CorExtend, and MIPS-Verified are trademarks or registered trademarks of MIPS Technologies, Inc. in the United States and other countries. All other trademarks referred to herein are the property of their respective owners.
Printed in the USA. Rev 0509